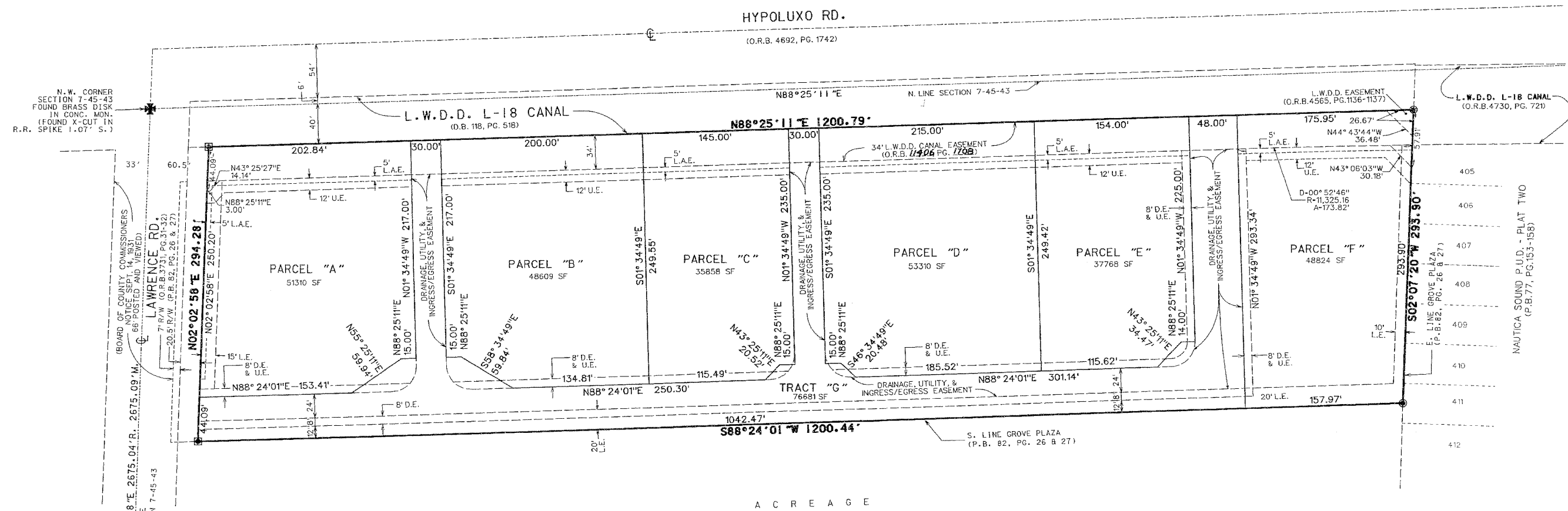
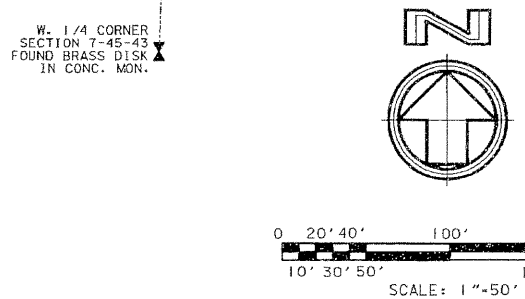


GROVE PLAZA REPLAT

REPLAT OF PARCELS "A"-"F", GROVE PLAZA, AS RECORDED IN PLAT
 BOOK 82, PAGE 26 & 27, PUBLIC RECORDS OF PALM BEACH COUNTY, FLORIDA
 IN SECTION 7, TOWNSHIP 45 SOUTH, RANGE 43 EAST
 CITY OF BOYNTON BEACH, PALM BEACH COUNTY, FLORIDA



A C R E A G E



- LEGEND:**
- FOUND PERMANENT REFERENCE MONUMENT (P.R.M.) LS 5273
 - ⊙ SET PERMANENT REFERENCE MONUMENT (P.R.M.) LB2936
 - ⊕ CENTERLINE
 - D.E. DRAINAGE EASEMENT
 - L.A.E. LIMITED ACCESS EASEMENT
 - L.E. LANDSCAPE EASEMENT
 - L.W.D.D. LAKE WORTH DRAINAGE DISTRICT
 - O.R.B. OFFICIAL RECORDS BOOK
 - PG. PAGE(S)
 - P.B. PLAT BOOK
 - R/W RIGHT-OF-WAY
 - SF SQUARE FEET
 - U.E. UTILITY EASEMENT

FILE: q1:\p\refa\std04\std04pp2b.dgn
 DATE: 14-Jul-99 07:58